

Paterson Plant 1 Extension



May 1



May 15



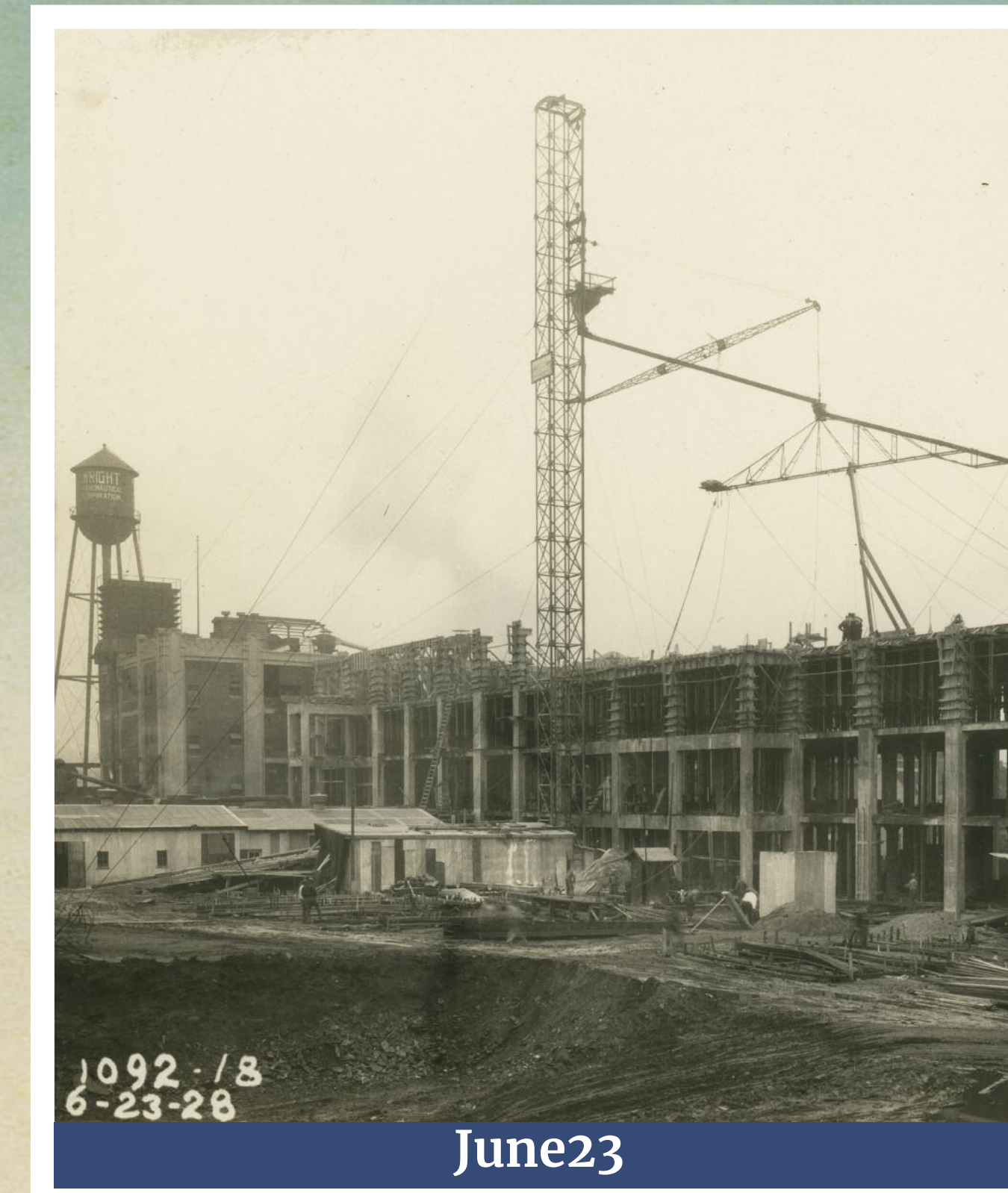
May 29



May 22



June 7



June 23



July 16



May 8



May 22



May 29



June 7



June 30



July 30



May 15



May 29



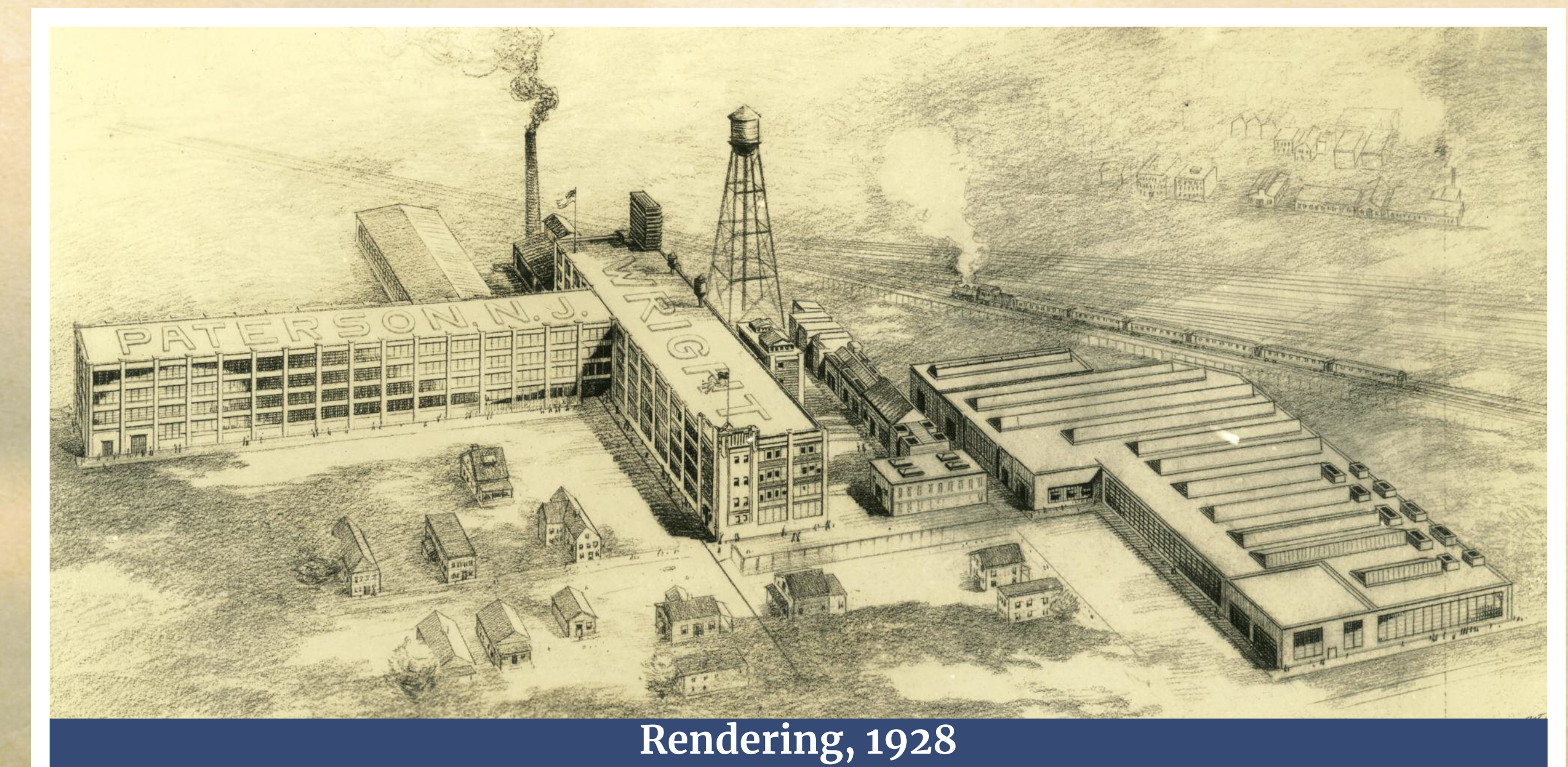
July 7



August 3



June 12



Rendering, 1928

By the late 1920s, the Wright Aeronautical Corporation was expanding rapidly. This expansion resulted in the need for new fabricating and assembly buildings. This extension was built by the John W. Ferguson Company, a Paterson contractor known for its early adoption of reinforced concrete as the material of choice for large commercial buildings. The Ferguson Company built many buildings in and around Paterson including the Fabian Theater, the Alexander Hamilton Hotel, the YMCA, and St Joseph's Hospital. They also built many structures throughout the Northeast, as well as in Bermuda. These photographs illustrate how quickly they were able to build this immense structure, in a period of just four months.

Paterson Museum Collection

1928

May

June

July

August